

# XEROX®

## DocuMate® 152



# One Touch Makes Your Paper More Productive

The Xerox® DocuMate® 152  
Document Scanner

- **Convert documents into searchable PDF files with One Touch**
- **9 One Touch pre-programmed "scan-to" destinations**
- **Scans 36 images per minute\* in duplex**
- **Compact Duplex Scanner holds 50 pages ADF capacity\*\***
- **Over \$400 in bundled software**

**Visioneer OneTouch scans directly to searchable PDF!**

\*Up to 36 ipm at 200 dpi, black & white  
\*\* 20# paper

Do you want to do more with the paper on your desk? Would you like to copy it, collate it, file it, search it, mail it and make it disappear? Sounds time consuming doesn't it? How about if you could do all that with just one touch? The Xerox DocuMate 152 is a new desktop scanner that can do all this and more. The DocuMate 152 includes Visioneer OneTouch™ technology, and an advanced TWAIN driver that will allow you to communicate with hundreds of enterprise content management (ECM) and document image management (DIM) software solutions with the press of a single button. It will not only make your paper more productive but make you look good too.

Most scanners today have scan buttons as well but all buttons are not created equal. Only Visioneer OneTouch initiates and completes the scanning process and delivers your document to the application, folder or device of your choice. No additional clicks, no additional steps. The DocuMate 152 scans and delivers at the touch of a button. And with Kofax® VRS™ technology, your imperfect originals are enhanced, straightened and cropped automatically with that same touch of a button, easy, simple yet powerful. Document imaging is rapidly growing in nearly every business today. As more users adopt scanning solutions at the desktop, it has become clear that ease-of-use is a key feature. Most new users in document imaging are not scanner experts, so simplified, point-and-click solutions that deliver high quality images and integration with business applications are in demand.

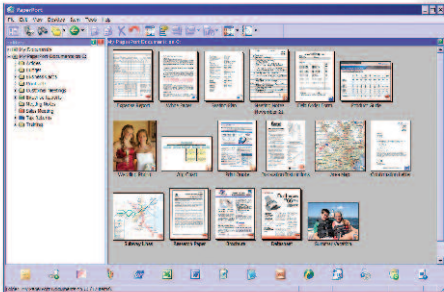
With an amazingly small footprint, the scanner fits comfortably on any desk making it the perfect solution for small and large paper-intensive business that desire the capability to quickly convert paper documents into searchable PDF files that are easily shared, organized and protected, including corporations within the banking, education, energy, financial, government, healthcare and manufacturing industries.

The Xerox DocuMate 152, color sheetfed document scanner, scans up to 36 images per minute (ipm) in duplex mode, includes a 50-page automatic document feeder to handle business cards and checks to legal size documents, and has the ability to automatically scan any of these into searchable PDF files. The Xerox DocuMate 152 was designed specifically for desktop use and incorporates OneTouch technology for eliminating multiple steps in sending scanned documents to predetermined applications or devices. The scanner offers a professional software bundle that includes ScanSoft Nuance PaperPort and OmniPage Pro for desktop document management and OCR, and NewSoft Presto! BizCard to make short work out of scanning your business cards and uploading them to Microsoft Outlook or other contact managers.

The Xerox DocuMate 152. It will not only make your paper more productive but make you look good too!



# XEROX<sup>®</sup> DocuMate<sup>®</sup> 152



### ScanSoft PaperPort

The easiest way to organize, find, and share all your paper, PDF, and digital documents.

### Scan, Send and Store with Visioneer OneTouch

Do more with the paper on your desk. Copy it, collate it, file it, mail it and make it disappear with just OneTouch. Visioneer OneTouch technology allows users to easily set the “destination” of their scanned documents by pressing a button and selecting one of nine pre-programmed (or user-customizable) scan settings. “Destination” examples include scan to searchable PDF, scan to e-mail, scan to print, scan to archive, scan to network, and scan to OCR.

### Benefits of TWAIN

The Xerox DocuMate 152 includes an advanced TWAIN driver that will allow you to communicate with hundreds of enterprise content and document image management (DIM) software solutions with the press of a single button. The TWAIN initiative was originally launched in 1992 by leading industry vendors who recognized a need for a standard software protocol and applications programming interface (API) that regulates communication between software applications and imaging devices (the source of the data).

### Scan to Searchable PDF

The Xerox DocuMate 152 software bundle allows users to automatically scan to image-over-text searchable PDF. Searchable PDF maintains the visual integrity of the original document, with the text portions of the image converted via OCR for search purposes and stored in a separate layer. This allows for low-cost conversion from paper to PDF, while permitting easy distribution and ability to search, link, select/copy and index the text.

### Convert Existing Files to PDF

The DocuMate 152's PaperPort software lets users convert existing electronic files to PDF for storage or transfer. Supported file types include Microsoft Office, Corel, and AutoDesk documents, as well as the popular TIF, MAX, JPG, and BMP formats.

### Software That Gets the Job Done

The DocuMate 152's robust software suite includes comprehensive TWAIN support:

- ScanSoft PaperPort
- ScanSoft OmniPage Pro
- Visioneer OneTouch 4.0
- NewSoft Presto! BizCard

### DocuMate 152 Product Specifications Model# XDM1525D-WU

Scan Speed	
Black & White, 200 dpi	Up to 18 ppm simplex / 36 ipm duplex
Color, 150 dpi	Up to 18 ppm simplex / 36 ipm duplex
Optical Resolution	600 dpi
Scanner Bit Depth (color)	48-bit internal (16-bit A/D converter recognizes over 281 trillion colors)
Scanner Bit Depth (grayscale)	16-bit internal (65,536 shades of gray)
Output Bit Depth	48-bit color, 8-bit grayscale, 1-bit black & white
Scan Method	Fast Duplex Sheetfed
Interface	Hi-Speed USB 2.0 (USB 1.1 compatible)
Dimensions	12"(w) x 5.62"(d) x 10.5"(h)
Weight	6.5 lbs.
ADF Maximum Document Size	8.5" x 14.5"
ADF Minimum Document Size	3.5" x 2"
ADF Capacity	50 sheets (20 lb. paper)
Duty Cycle	1000 pages/day

### Minimum System Requirements

- Pentium<sup>®</sup> IV or equivalent processor
- Windows<sup>®</sup> XP\*/2000\*\*/Vista
- 256MB RAM (512MB RAM for Windows XP)
- 350MB available hard disk space
- CD-ROM drive
- USB port

\*Service Pack 1 and 2 \*\*Service Pack 4

### Support Contracts

Our multi-faceted support offers are designed to meet your needs. Each product is shipped with Xerox's Standard one-year Product Warranty. For those seeking more comprehensive support, Xerox is pleased to offer the Advanced Exchange Warranty. More information is available at [www.xeroxscanners.com](http://www.xeroxscanners.com).

### Contents

- DocuMate 152 Scanner
- Power Supply
- USB 2.0 Cable
- Quick Install Card
- Technical Support Card
- User's Manual
- CD-ROM including:
  - Scanner Driver (TWAIN Driver)
  - ScanSoft PaperPort
  - ScanSoft OmniPage Pro
  - Visioneer OneTouch 4.0
  - NewSoft Presto! BizCard

