

# Specifications for the Xerox® Wide Format 7740 Scan Solution

## Scanner

### Speed

- Monochrome: 10.0 ips (254 mm/s) maximum
- Colour: 3.3 ips (83.8 mm/s) maximum

### Resolution Levels

- 150 dpi
- 200 dpi
- 400 dpi
- 600 dpi

### Image Levels

- Monochrome: 1
- Greyscale: 256
- Colour: 16 million

### Scan Width

- 40" (1016 mm) maximum

### Scan Length

- 15 ft (4.57 meters) maximum

### Document Input Width

- 41.3" (1,050 mm) maximum

### Document Input Thickness

- 0.012" (0.3 mm) maximum

### Document Registration

- Left
- Centre
- Auto-Detect

## Space requirements

- Physical: 48.5" x 25.5" (1,231.9 mm x 647.7 mm)
- For Service: 96.5" x 73.5" (2,451.1 mm x 1,866.9 mm)

## PC hardware requirements

- Pentium 4, 2 GHz or better processor
- 200 MB of available disk space (for installation)
- 10 GB of available disk space (for operation)
- Minimum 1 GB of RAM (for Xerox® FreeFlow® Accxes® Indexer)
- Minimum 2 GB of RAM (for Xerox® FreeFlow Accxes Copy)
- (3 GB RAM recommended)
- CD-ROM Drive (for installation)
- 1,024 by 768 24-bit display resolution (minimum)
- USB 2.0 Port Available

## PC operating systems supported

- Microsoft® Windows® 7 (32 and 64 bit)
- Microsoft Windows Vista (32 bit)
- Microsoft Windows XP (32 bit)
- Latest service packs recommended for each

## Server operating systems supported

- Windows Server R2
- Windows Server 2008
- Latest service packs recommended for each

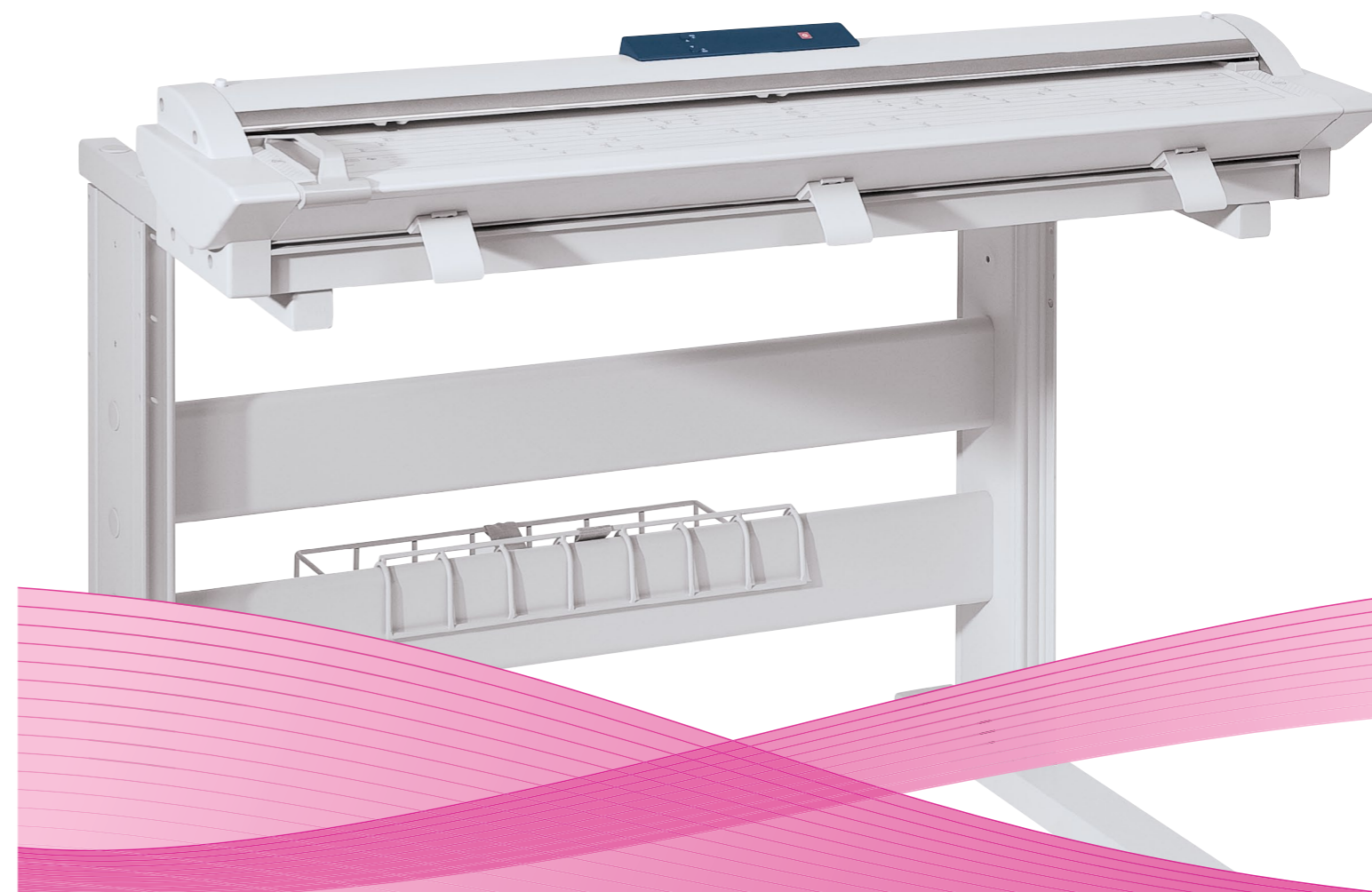
## FreeFlow Accxes Indexer (optional)

- The Accxes Indexer application is easily customized to meet many specific requirements:
- The default/initial view can be configured to automatically show the whole image, or for most images, it can be zoomed to a title block corner.
- Images can be indexed using up to 10 indexing fields, with various naming conventions and sorted into specific or custom directory structures.
- Accxes Indexer incorporates simple editing tasks such as crop, despeckle, and deskew. Thesoftware can also be configured to use a third-party Raster Editor in order to make further advanced changes to images prior to completing the indexing task.
- Post-processing options can be implemented to add additional functions, such as converting the indexed image to other formats or automatically importing to a document management system.
- Configuration settings can be password protected to ensure indexing is performed as required by the Administrator.

## FreeFlow Accxes Copy (optional)

- View the currently selected image (Viewer feature)
- Show thumbnails of a scanned document (Preview Pane)
- Displays whether or not a scanner is connected (Scanner Status)
- Displays the size of the currently selected document (Document Size feature)
- Selects an area of the image that can be printed (Area of Interest feature)
- Check what image data has been captured (Low Resolution Zoom feature)
- Sets the Printer, Size, Scale, Quality, & Copies (Low Resolution Zoom feature)
- Prints the currently scanned/viewed image
- Scan to PDF file with PDF/A-1b compliance

## Xerox® Wide Format 7740 Scan Solution Brochure



# Xerox® Wide Format 7740 Scan Solution

## Colour and monochrome scanning workflows made simple

Your nearest Xerox-authorized  
wide format reseller is:

To learn more about the Xerox® 7740 Wide Format Printer, visit [www.xerox.com](http://www.xerox.com)  
or call 1-800-ASK-XEROX.



# Proven reliability and quality when scanning your hard copy wide format documents

The Xerox® Wide Format 7740 Scan Solution delivers crisp 600 dpi scan resolution and supports scanning both monochrome and colour documents up to 40 inches (1,016 mm) wide. Whether you want to scan and print to a remote printer or to turn your hard copy documents into industry standard electronic file formats, the Xerox® 7740 Scanner is the solution for you.



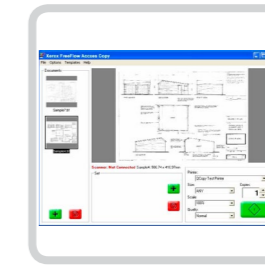
- 1 Front side paper exit
- 2 Scanner control panel
- 3 40" scan width
- 4 Adjustable scanner height
- 5 Scan server basket
- 6 Paper feed guide
- 7 Paper size templates
- 8 Scanner release button



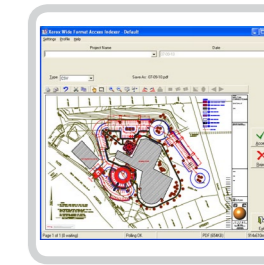
Integrated FreeFlow Accxes Print Server and print driver deliver production-level performance.



Delivers 600 dpi scan resolution with 256 levels of greyscale.



With Xerox® FreeFlow® Accxes® Copy, you can do more with, and expect more from, your wide format colour scanning workflow. Not only can you produce great colour prints from scans, but this solution enables you to work with both Xerox® and non-Xerox® devices to get your jobs done.



With Xerox® FreeFlow® Accxes® Indexer, dynamic file-naming for your documents is fast, easy and flexible. And advanced file naming and indexing are critical to optimising your document management solution.

The Xerox® FreeFlow® Accxes® Productivity Tools drive the 7740 Scan Solution. These software programs enable tremendous workflow flexibilities for your business. You choose the software solution that best meets your workflow requirements.

Easily integrate with existing workflows via industry standard file formats and Microsoft® Windows® operating systems. The 7740 supports various file formats including, but not limited to, TIFF, JPEG and PDF. Industry standard file formats combined with the Windows operating environment make the sky the limit when you or your customer begin integrating the Xerox® 7740 Scan Solution with your existing document workflows and management systems.

### Delight customers with image quality

The Xerox® Wide Format 7740 Scan Solution delivers 600 dpi scan resolution complete with 256 levels of greyscale, which enables superior image scanning quality.

You and your customers are often working with older originals that have faded and become worn or damaged. The advanced image editing features of the Xerox® FreeFlow® Accxes® Productivity Tools take your image quality to the next level with their ability to improve scanned files even when scanning challenging documents.

### Produce more jobs

By moving your scanning workflows to the standalone Xerox® 7740 Scan Solution, you reduce conflict for machine resources by distributing the work. You free up your wide format printer resources to focus on what they are good at, producing crisp clear wide format documents.

### Grow your business

The flexibility of the 7740 Scan Solution means that it will grow with your business and open new opportunities in the future. Whether migrating from monochrome to CAD colour documents or moving all the way to full production colour documents, the 7740 can support you. As you or your customers migrate through the dynamic requirements for electronic document management, the diverse workflows supported by the 7740 will integrate seamlessly with your solution.

### Get the solution you need to meet a wide array of demanding applications:

- Architectural or construction plans
- Architectural or engineering renderings
- Schematics
- Electrical diagrams (e.g., wiring)
- Mechanical 2D and 3D
- Solids modeling
- Seismic
- Scientific/Medical
- Very low cost signage
- GIS/Mapping and posters