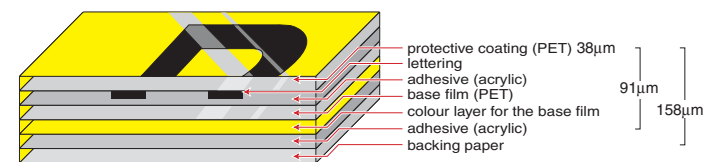


Longer Lasting Labels

Brother's unique, patented TZ tapes are designed to be extra hard wearing. Tests have shown that these scratch-proof labels can withstand heavy abrasion, electricity and lengthy exposure to chemicals, sunlight, water and extreme temperatures from -50°C to 300°C. Brother laminated tapes consist of six layers of materials, resulting in a thin yet extremely strong label. Characters formed with thermal transfer ink are actually printed onto the underside of the laminate. Sandwiched between two layers of PET (polyester film) this lets you create characters that are virtually indestructible.

Brother Laminate Tape Construction



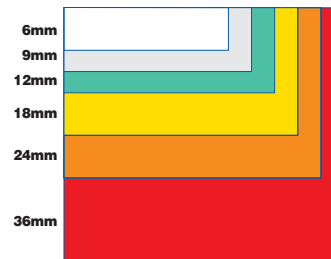
LAMINATED BROTHER TAPES WITH PATENTED BROTHER UNDER-TAPE PRINTING

Tape Options

- Brothers standard laminated tapes include fluorescent, transparent and metallic options. Specialist tapes include High Grade (HG), Paper, Non-laminated, Matt, Strong Adhesive, Security Tape, and Flexi ID. All are available in varying widths, character and tape colour options.
- Tape widths of 6,9,12,18, 24 and 36mm
- Standard tape length of 8m*

*Providing approximately 100 labels. (based on 10 characters & standard label length 8cm)

Tape Widths



Tape Colours



NB. Not all tape colours are available in all countries.

Technical Information

Hardware

Housing Dimensions	116mm(W) x 190mm(D) x 127mm(H)
Housing Weight	1.2kg
Housing Colour	Silver / Black / Blue
Advanced Cutter	Auto full cutter with continuous half cut capability
Power	AC adapter (AD-9000) 120v to 240v AC
Status Indicator	Multi-colour print/error lights
Items Included	User Guide CD Rom (Software/Driver) AC Adapter USB & Serial Cable Black on White 24mm TZ Tape (UK version: additional 1 x Black on Yellow 36mm tape) Lettering Stick Label Catch Tray
Tape Type Compatibility	TZ (Standard), HG (High Grade), AL (Thermal Paper)
Tape Sizes	6 / 9 / 12 / 18 / 24 / 36 mm
Print Resolution	360 x 360 dpi (up to 720 x 360 dpi with HG tape)
Max. Print Height	27.1 mm
Print Speed	20 mm / sec (For TZ/AL tape) Max. 40 mm / sec (For HG tape only at 360 x 360 dpi)
Interface	USB(Ver 1.1), Serial (Max. 115.2 kbps)
Network Connection	10 Base-T / 100 Base-TX with optional PS-9000

System Requirements

Interface	RS-232C, USB 1.1 Port	RS-232C, USB 1.1 Port
Computer	PC installed with Microsoft® Windows® 95, NT4.0 (Service Pack 6) 98/98SE/Me/ 2000 Professional/XP PC pre-installed with Microsoft® Windows® 98/98SE/Me/ 2000 Professional/XP Macintosh series with USB port installed with Mac OS 8.6-9.x Mac OS X 10.1-10.2.6	PC installed with Microsoft® Windows® 95, NT4.0 (Service Pack 6) 98/98SE/Me/ 2000 Professional/XP PC pre-installed with Microsoft® Windows® 98/98SE/Me/ 2000 Professional/XP Macintosh series with USB port installed with Mac OS 8.6-9.x Mac OS X 10.1-10.2.6
Memory	Minimum 64MB, Minimum 24MB	Minimum 64MB, Minimum 24MB
Hard Disk	Minimum 70MB, Minimum 100MB	Minimum 70MB, Minimum 100MB
Others	CD-ROM Drive for installing software	CD-ROM Drive for installing software

Software

Software Supplied	P-touch Editor Version 4.0 (PC), Version 3.2 (MAC) P-touch Quick Editor Version 1.2 (incompatible with Windows® 95/NT4.0) High speed printer drivers
Language	Windows® : English / French / German / Netherlands / Swedish / Norwegian / Danish / Spanish / Portuguese. Mac: English only.
Available Fonts	All True Type Fonts installed in your computer
Graphic Support	Clip art, Symbol fonts, Screen capture, Image file importing
Import Image Files	BMP / ICO / DIB / TIF / JPG / JPEG / WMF / EMF / PNG / PICT
Label Length Setting	4 - 1000 mm
Bar code	Code39 / I-2/5 / UPC-A / UPC-E / EAN 13 / EAN 8 / CODABAR(NW-7) / CODE 128 / EAN 128 / POSTNET / Laser Bar Code / ISBN-2 / ISBN-5 / PDF417 / QR CODE / Dara Matrix
Sequential Barcoding	Yes
Copy Printing	2 - 5,000 (Max)
Tape Margin Settings	1 mm - 127 mm
Time / Date Printing	Yes (with date forward function)
Mirror Printing	Yes
Vertical Printing	Yes
Sequential Numbering	Yes - numbers and alphabetic characters
Database Compatibility	Microsoft® Access (97, 2000 and 2002), CSV, Excel, P-touch Editor format
Auto Format	14 categories
Table Insertion	Yes
Screen Capture	Yes

W Windows only
M Mac only

Contact:



Brother UK Ltd.
Audenshaw, Manchester M34 5JD
Tel: 0870 830 4020 (National Rate Call) Fax: 0870 830 4031
www.brother.co.uk

All specifications correct at time of printing. Brother is a registered trademark of Brother Industries Ltd. Brand product names are registered trademarks or trademarks of their respective companies.



OPTIONAL



NETWORK CONNECTIVITY



Always at your side



The P-touch 9500PC from Brother.

The P-touch 9500PC is a high performance, PC compatible labelling system, designed to produce exceptionally high quality durable labels in an instant, making it the perfectly flexible solution for the office, warehouse, store, laboratory or hospital. This label printer is also the ideal machine for printing durable bar code labels.

The labelling machine that puts you in control

In a working environment where a wide variety of labels are required as soon as possible, the P-touch 9500PC will produce exceptional levels of performance. This high speed labelling machine prints up to 720 x 360 dpi (with HG tape), and is compatible with all of Brother's labelling software. When used in conjunction with the PS-9000 print server, full networking capability allows an unlimited number of users to print labels on the P-touch 9500PC, making it a workplace tool that will prove its value again and again.

Enhanced performance from simple to use software

Brother's easy-to-use software has been designed to produce an outstanding performance from the P-touch 9500PC. It opens up almost limitless labelling possibilities and will certainly improve the efficiency of any workplace.

NEW P-touch Editor 4.0

P-touch Editor 4.0 is the most advanced P-touch software available. It's easy to use and allows you to design and edit your label on screen before printing, making label possibilities endless.

The P-touch Library within P-touch Editor 4.0 is an automatic saving and previewing function, enabling you to easily find previously made labels, even if you haven't saved them.

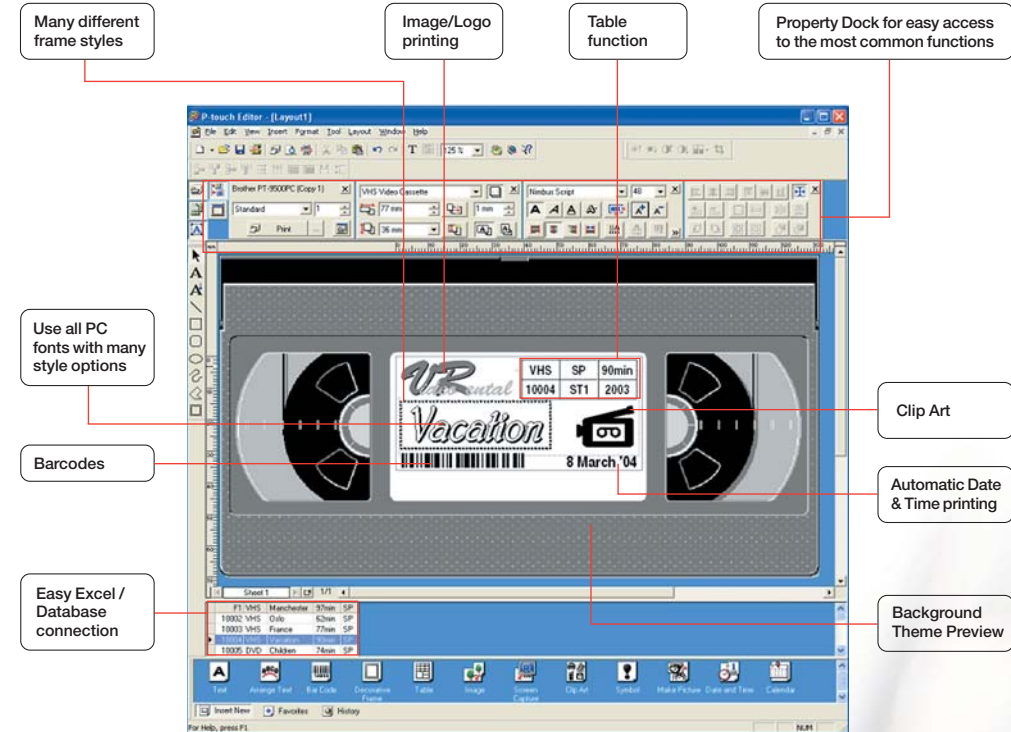
The screen capture function allows you to grab whatever you see on screen and print it, directly onto a label.

P-touch Quick Editor

The ultimate software for printing instant labels gives you the ability to grab text from other applications currently being utilised on your PC. The software automatically fits your text to the width of tape currently in your machine.

Software in action

Endless ways to customise your labels



b-PAC

Enables printing of labels directly from custom software, or from Microsoft Office suite of applications, such as Microsoft Word and Excel. The programmer uses b-PAC to produce a bespoke system, so you won't have to learn how to use a new software package. Further information and downloads can be found at www.P-touchSolutions.com

Microsoft® Visio

You can even print labels directly from Microsoft® Visio using Brothers customised Microsoft® Visio plug-in. Installation of this tool is quick and easy. Further information and downloads can be found at www.P-touchSolutions.com

Tape options

Brother has developed a range of durable tapes that will enhance your printing options and improve labelling performance.

TZ tapes available for use with the P-touch 9500PC range from widths of 6mm to 36mm. With the extra space available in 36mm tape, you can incorporate sizeable images into the label design, or print small labels vertically so that the tape itself will last much longer. Special tapes include:

Security Tape - Laminated

Security tape is designed to leave a checkerboard pattern as an indicator that the label has been peeled off.

High Grade (HG) Tape - Laminated

For use only with the P-touch 9500PC, this tape allows high-speed printing at a maximum of 40mm per second, twice as fast as standard tapes and high resolution printing at 360 x 720dpi.

Paper Tape

Ideal for printing address labels from your desktop.



Information Technology (I.T.)



Laboratory / Hospital



Warehouse



Office