

MFC-J5620DW Technical Specifications

A robust, fully featured model in the Business Smart range of professional inkjet printers, the MFC-J5620DW is designed around increasing office productivity. High yield ink cartridges, coupled with a paper capacity of up to 330 sheets ensure that the printer is always ready – allowing your team to focus on your business. A 35 sheet automatic document feeder makes scanning, copying, and faxing fast and hassle-free.

Print 3.0 is all about convenient printing. You can scan and share documents across your existing wired or wireless network, or print from your mobile devices through Brother's iPrint&Scan app, Apple Airprint or Google Cloud Print. You can also connect directly to the web from your printer to scan to; or print from Dropbox, Google Drive, Box, OneDrive, Picasa™, Flickr®, Evernote™, and OneNote.

The MFC-J5620DW is also able to print in A3 paper sizes, and in A4 at speeds of up to 22ipm (mono) and 20ipm (colour). This allows your business to present professional, high quality output without the wait, while high capacity ink cartridges print up to 2,400 pages and help conserve resources without sacrificing on quality.

All Brother inkjet multifunction printers incorporate an ink system with four individual ink cartridges – meaning you only need to replace the ink that runs out – reducing waste and saving you money. The MFC-J5620DW is also compliant with strict ENERGY STAR and Blue Angel and Nordic Swan environmental

GENERAL

Memory capacity	128MB
Connectivity	USB 2.0, Wireless 802.11b/g/n, Ethernet 10/100BASE-TX
Mobile connectivity	iPrint&scan app, Airprint, Google Cloud Print™, Wi-Fi Direct
Display	9.3 cm LCD touchscreen display

COLOUR PRINTER

Speed (laser comparable)*	Up to 22ipm mono & 20ipm colour
2-sided print	Automatic up to A4
Resolution	Up to 6,000 x 1,200 (vertical x horizontal)
Borderless printing	Available for A3, A4, LTR, A6, Photo 10x15cm, Photo-L, Photo 2-L, Index Card, Postcard
Minimum droplet size	* 1.5pl (when used with Brother BP71 paper, see Supplies section)

COLOUR FAX

Modem	33.6kbps
Speed dials	100 locations for pre-stored numbers
Page memory	Up to 200 pages (ITU-T Test chart No 1)
Error correction mode	Yes
Other functions	Fax forwarding, Remote access, Fax retrieval, Dual access, I-Fax**, PC-fax send, PC-fax receive***, Auto reduction, Group dials

COLOUR COPIER

Speed	Up to 12ipm mono & 9ipm colour
Resolution	1,200 x 2,400dpi (colour & mono)
Multi copy	Yes (99 copies)
Enlargement / reduction ratio	25% - 400%
Other features	N-in-1, Poster printing

COLOUR SCANNER

Resolution	Optical: Up to 2,400dpi Interpolated: Up to 19,200dpi
Scan speed	From 3.37 seconds mono & colour at 100dpi
Scan format	JPEG, BMP, PDF, TIFF, PNG (USB flash memory drive supports PDF mono & colour, JPEG, TIFF)
Scan to	Email, OCR, Image, File /Card, USB Flash Drive, FTP, Network***, E-mail server**

PAPER HANDLING

Paper input	250 sheet standard paper tray up to A3 35 sheet automatic document feeder (ADF) 80 sheets (up to A4) or 5 sheets (up to A3) rear multi purpose tray 1 sheet manual feed slot up to A3
Paper output	50 sheets
Paper handling sizes	Landscape: A4, LTR, EXE. Portrait: A3, LGR, LGL, A5, A6, Photo, Indexcard, Photo-L, Photo-2L, C5, Com-10, DL Envelope, Monarch
Media types	Plain, Inkjet, Glossy, Transparency

* ISO/IEC 24734

**Optional free download available from <http://support.brother.com>

***Windows® only

****Approx. cartridge yield is declared in accordance with ISO/IEC 24711

DIRECT PRINT AND SCANNING

USB	PictBridge, USB flash memory drive
Media cards	Memory Stick Duo/Pro Duo/Micro, Secure Digital (SD), Secure Digital High Capacity (SDHC), Secure Digital Extended Capacity (SDXC), Multimedia Card, Multimedia Card Plus, Multimedia Card Mobile
Direct print format	JPEG
Direct scan format	JPEG, PDF (colour), TIFF, PDF (mono)

SOFTWARE

Driver software included	Brother MFL-Pro Suite
Software - Windows®	Brother ControlCentre4, Nuance® Paperport® 12 SE with OCR
Software - Macintosh®	Brother ControlCentre2, NewSoft® Presto!® PageManager9
Supported operating systems	Windows® 8 Windows® 7 Windows Vista® Windows® XP Windows Server® 2003 & 2003 R2 Windows Server® 2008 & 2008 R2 Windows Server® 2012 & 2012 R2 Mac OS X v10.7.5/10.8.x/ 10.9.x

SUPPLIES

Standard cartridges	LC223 BK/C/M/Y black and colour - approx. 550**** A4 pages
High yield cartridges	LC225 XL C/M/Y colour - approx. 1,200**** A4 pages
Super high yield cartridges	LC229 XL BK black - approx. 2,400**** A4 pages
Brother paper	BP71GA3: A3 glossy photo paper, 20 sheets BP71GLA: A4 glossy photo paper, 20 sheets BP71GLP: 4x6" glossy photo paper, 20 / 50 sheets BP60MA: A4 matte inkjet paper, 25 sheets BP60PA: A4 inkjet paper, 250 sheets



WEIGHTS & DIMENSIONS

With carton	W589 x D425 H362mm 14.7kg
Without carton	W490 x D345 x H240mm 11.7kg

OTHERS

Power consumption	Operating: Approx. 32W Ready: Approx. 5.5W Sleep: Approx. 1.5W Off: Approx. 0.04W
Sound pressure level (operating)	50dBA (average)



brother
at your side

Brother International Europe Ltd

Brother House, 1 Tame Street, Audenshaw, Manchester M34 5JE

Tel: +44 (0)161-330 6531 Fax: +44 (0)161-330 5520

Website: www.brother.eu

All specifications correct at time of printing. Brother is a registered trademark of Brother Industries Ltd. Brand product names are registered trademarks or trademarks of their respective companies.

MFC-J5620DW Business Smart

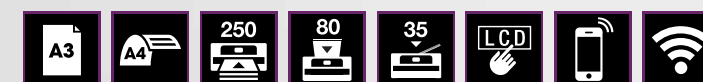
brother
at your side



PRINT - SCAN - COPY - FAX

THE ALL-IN-ONE INKJET THAT REDEFINES
PRINTING FOR YOUR BUSINESS

WELCOME TO **PRINT 3.0**



INTRODUCING

THE MFC-J5620DW

REDEFINING INKJET PRINTING FOR YOUR BUSINESS

Enjoy high quality business printing with the MFC-J5620DW. Fast, cost effective and robust, it's the perfect choice for improving productivity levels. With specially designed features such as 2-sided printing and ink save mode to ensure your running costs are kept to a minimum, the super high yield supplies lower the total cost of ownership and running costs even further. Take advantage of A3 printing to create high impact documents, and versatile paper handling thanks to the rear paper tray. The MFC-J5620DW also includes features such as cloud connectivity and direct mobile printing – essential in today's fast-paced business environments.

Welcome to a new age of printing. WELCOME TO **PRINT 3.0.**



COST EFFECTIVE

Super high yield ink cartridges capable of printing up to 2400 black and 1200 colour pages, combined with other cost-saving features like 2-sided printing and ink save mode help to lower your total cost of ownership.



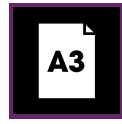
ENHANCED CONNECTIVITY

With built-in wireless and wired LAN, the cloud connected MFC-J5620DW ensures seamless collaboration between team members. Scan to and print directly from cloud services such as Dropbox, Evernote™, OneDrive and Google Drive to digitise paper-based content and share among your team in seconds.



PRODUCTIVE

The MFC-J5620DW comes packed with a range of productivity solutions to help streamline your business. Fast print and scan speeds, paired with the 35 sheet automatic document feeder help to quickly capture and share vital information.



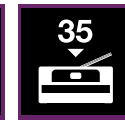
PROFESSIONAL

Ensure that your business is noticed with high quality A3 size printing. A front loading, high capacity paper tray and versatile rear paper tray offer your team the options to print what they want, when they want.



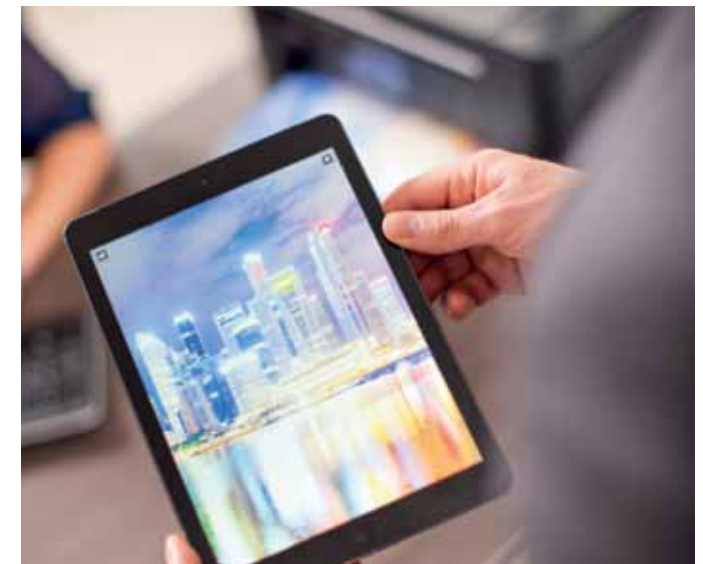
MOBILE INTEGRATION

Agile businesses are constantly ahead when it comes to technology. With built-in support for mobile print and scan solutions, your team can print and scan anywhere, anytime. The Brother mobile iPrint&Scan app provides compatibility with Apple, Android and Windows devices, allowing you to improve productivity levels.



Key facts

- 22 ipm mono and 20 ipm colour print speeds*
- Up to 2,400 page black and 1,200 page colour XL ink cartridges
- 250 sheet front paper tray and versatile rear multi-purpose paper tray (5 x A3/80 x A4)
- Up to A3 paper size and automatic 2 sided A4 printing
- 35 sheet automatic document feeder
- 9.3cm touchscreen colour LCD
- Wi-Fi & Ethernet network
- Mobile print & scan app



*ISO/IEC 24734